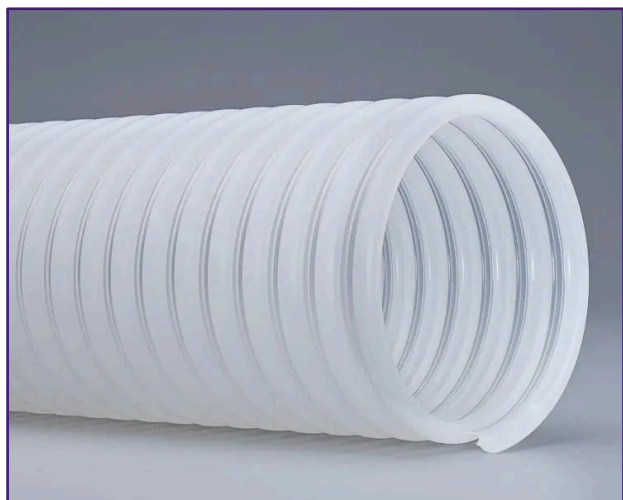


Genesis MKII

Convolutated Polyethylene Ducting



Construction: Medium weight, very flexible polyethylene ducting with an integral translucent copolymer helix.

Colour: Translucent.

Standard length: 15 metres.

Temperature range: -40°C to +60°C in a 20°C ambient.

Applications: Suction and transportation of fumes, gases and airborne particles, especially for the chemical and pharmaceutical industry, food processing, asbestos removal and insulation blowing equipment.

Properties: Easy to handle, flexible, easily cut, excellent chemical resistance, non-toxic and halogen free.

Options: Colour – Black.

| Inside diameter (mm) | Weight (Kg/m) | Wall Thickness (mm) | Bend Radius (mm) | Max. Work. Press. (Bar) | Max Vacuum (Bar) |
|----------------------|---------------|---------------------|------------------|-------------------------|------------------|
| 38 | 0.30 | 0.70 | 60 | 1.30 | 0.60 |
| 51 | 0.40 | 0.70 | 80 | 1.00 | 0.50 |
| 63 | 0.50 | 0.70 | 100 | 0.80 | 0.40 |
| 76 | 0.60 | 0.70 | 120 | 0.50 | 0.30 |
| 102 | 0.80 | 0.70 | 160 | 0.30 | 0.20 |

Technical data at + 20°C.
Other diameters/lengths available upon request.